



# ACTIVE TRANSPORTATION PLANNING BEYOND THE GREENBELT: THE OUTER RING OF THE GREATER GOLDEN HORSESHOE REGION

Nancy Smith Lea, Director  
Toronto Centre for Active Transportation  
Ontario Growth Secretariat  
Toronto, August 8, 2017

# ACTIVE TRANSPORTATION IN THIS CONTEXT

LOW DENSITY AND LARGE LAND MASS  
AGING POPULATION

HIGH RATES OF PHYSICAL INACTIVITY

HIGH RATES OF OBESITY AND DIABETES

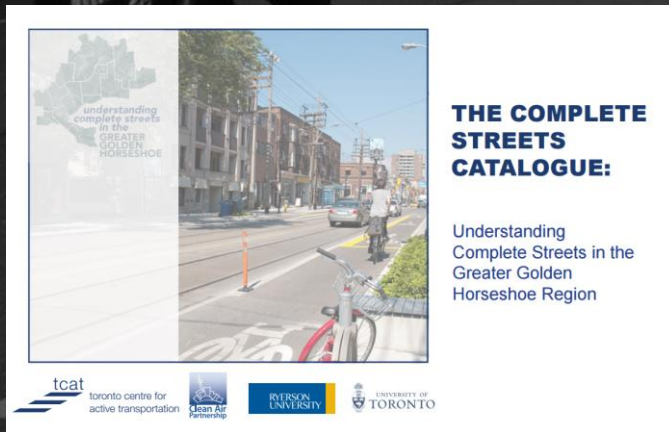
HIGH RATES OF MOTOR VEHICLE USE

# GROWTH PLAN & ACTIVE TRANSPORTATION

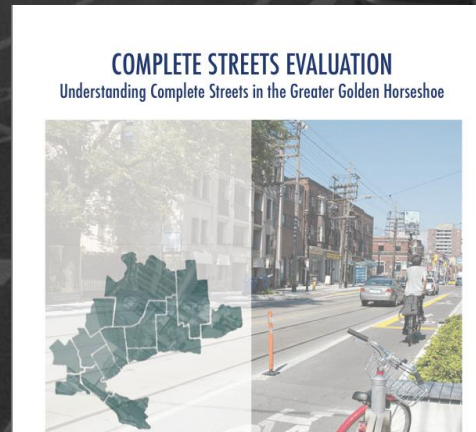
- Complete communities in all contexts: urban, suburban, rural
- Complete Streets approach for entire GGH street network
- Active transportation prioritized



# PRECEDING PUBLICATIONS



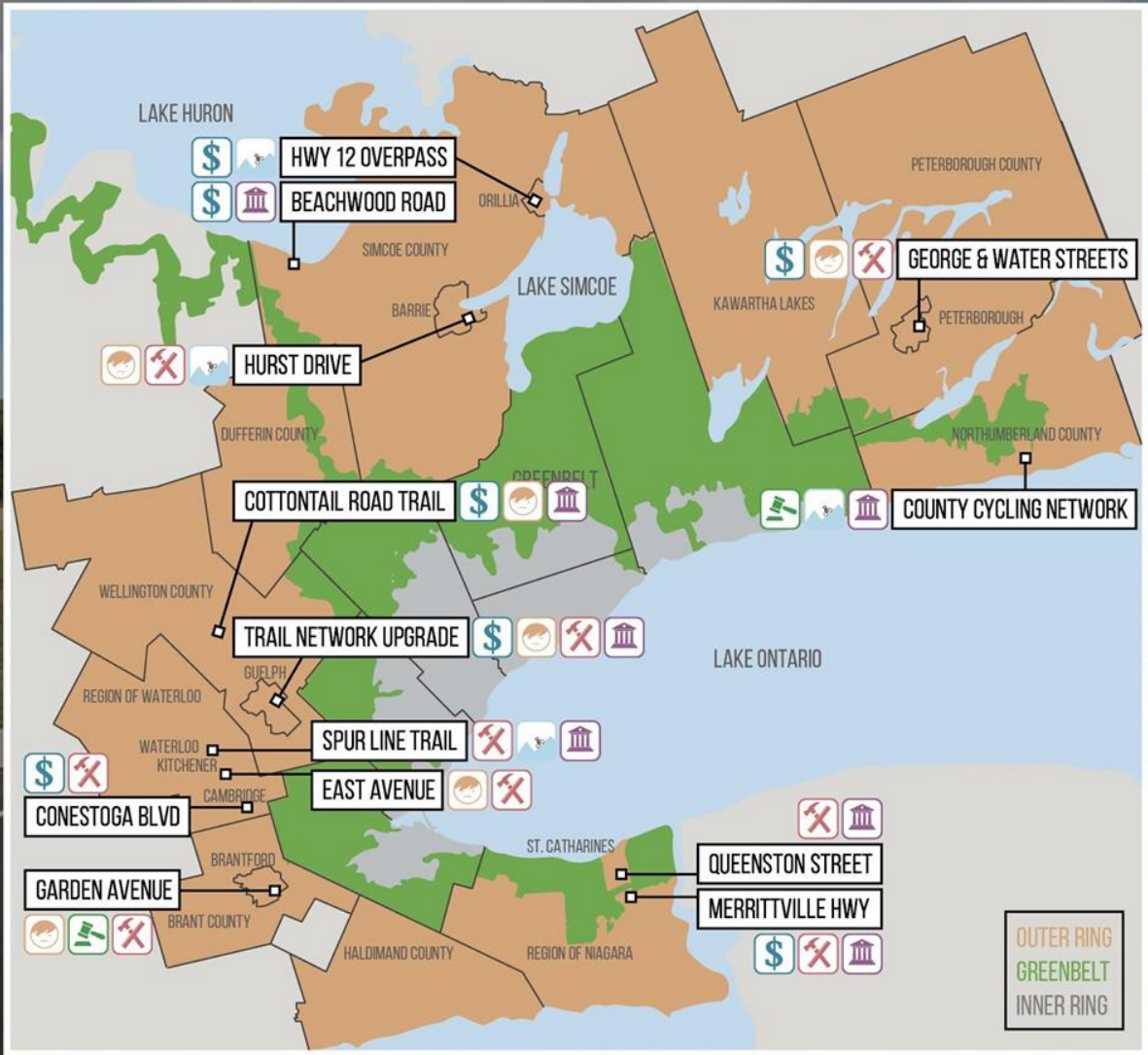
2014



2015



2016



# HIGHLIGHTS

A grayscale photograph of a city street. In the foreground, a cyclist is riding away from the camera on the left side of the road. The road has a designated bicycle lane with a bicycle symbol and dashed white lines. Several cars are parked along the right side of the street. In the background, a prominent clock tower with a dome is visible, surrounded by other city buildings. The sky is overcast.

**63% HAVE ACTIVE TRANSPORTATION PLANS**

**38% RECEIVED OMCIP FUNDING**

**PRE-EXISTING RAIL TRAILS IMPORTANT**

# CHALLENGES

RESOURCES



PUBLIC SUPPORT



LIABILITY



DESIGN



ENVIRONMENTS



AUTHORITY

# CASE STUDIES

## Challenges Discussed

## Built Features

Resources  
Public Support  
Liability  
Design  
Environments  
Authority

Road Diet  
Cycling  
Pedestrians  
Streetscaping  
Accessibility



### Rural Projects

4.1 Wellington County: Cottontail Road Trail

4.2 Northumberland County: County Cycling Network

4.3 Simcoe County: Beachwood Road



### Suburban Projects

4.4 City of Brantford: Garden Avenue

4.5 City of Barrie: Hurst Drive

4.6 City of Cambridge: Conestoga Boulevard

4.7 City of Orillia: Highway 12 Overpass

4.8 Region of Niagara: Merrittville Highway



### Urban Projects

4.9 City of Guelph: Trail Network Upgrade

4.10 City of Peterborough: George & Water Streets

4.11 Region of Waterloo: Spur Line Trail

4.12 City of Kitchener: East Avenue

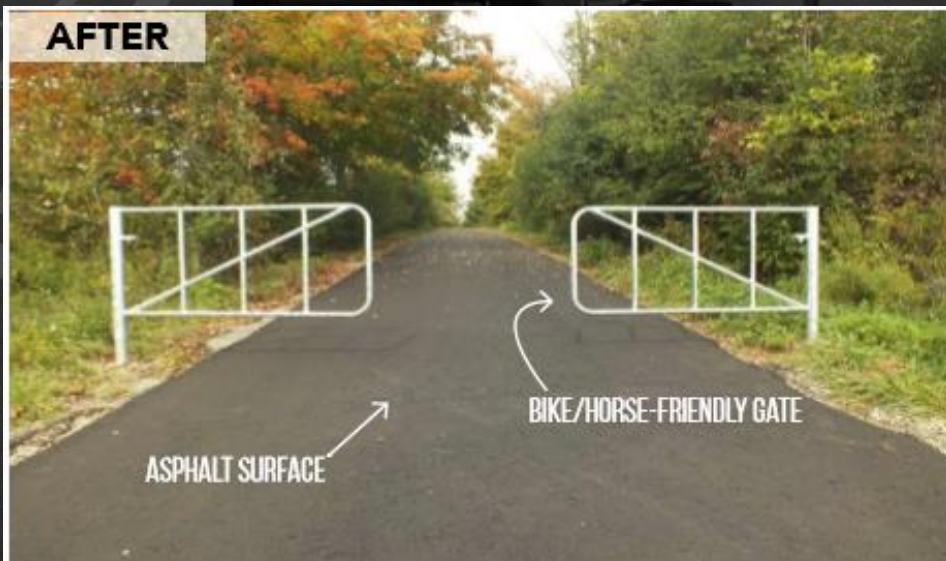
4.13 City of St. Catharines: Queenston Street



# RURAL PROJECT: WELLINGTON COUNTY (Cottontail Road Trail)

## Highlights:

No dedicated staff for AT  
Multi-jurisdictional  
coordination required  
Funding from multiple  
sources



# RURAL PROJECT: WATERLOO REGION (Spur Line Trail)

## Highlights:

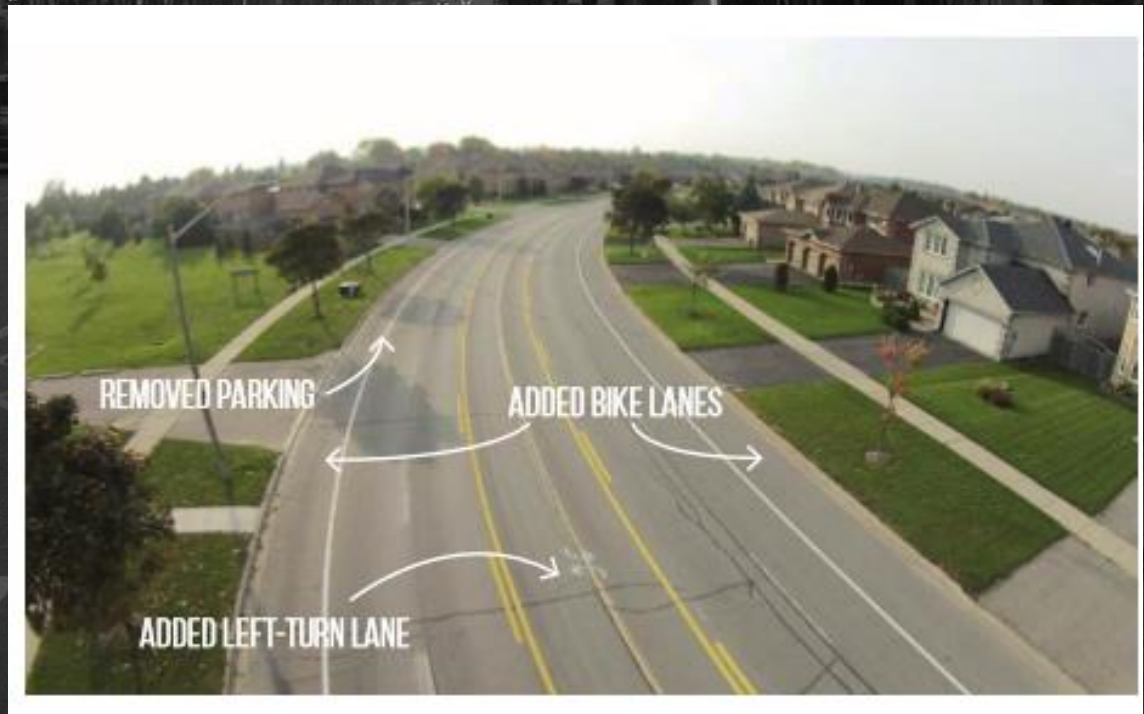
- Multi-use path connecting Waterloo to Kitchener GO Transit
- Strong multi-jurisdictional partnership
- Funding from Metrolinx



# SUBURBAN PROJECT: CITY OF BARRIE (Hurst Drive)

## Highlights:

- Road diet
- On-street parking removed, bike lanes installed
- Safety data important for public support
- Bike lanes cleared of snow



# URBAN PROJECT: PETERBOROUGH (George & Water Streets)

## Highlights:

- Sharrow markings converted to dedicated bike lane
- On-street parking removed
- Project required an EA
- Funding from OMCIP



# CONCLUSIONS

PROGRESS IS BEING MADE  
DIFFERENT CONTEXTS / SIMILAR SOLUTIONS  
PROVINCIAL FUNDING IS CRITICAL  
(OMCIP/OMCCP)



A black and white photograph of a city street. In the foreground, a cyclist wearing a helmet and a backpack is riding away from the camera. The street has a dedicated bike lane with a bicycle symbol on the pavement. Several cars are parked along the right side of the street. In the background, a prominent clock tower with a dome is visible, surrounded by other city buildings. The overall scene is a typical urban environment.

**Smith Lea, N., Mitra, R., Hess, P., Loewen, N., & Culp, D. (2017). Active Transportation Planning Beyond the Greenbelt: The Outer Ring of the Greater Golden Horseshoe Region. Toronto: Clean Air Partnership.**

**Available at: <http://www.tcat.ca/knowledge-centre/active-transportation-planning-beyond-the-greenbelt/>**

**THANK YOU.**